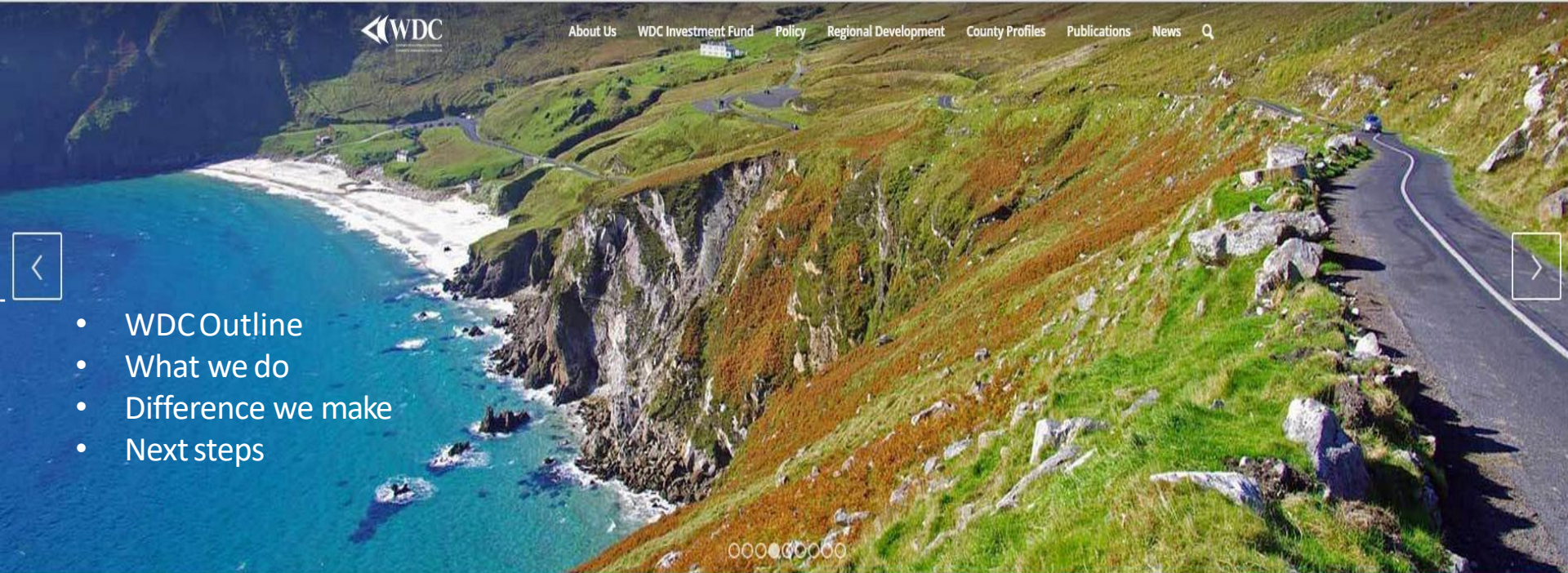




- 1. Introduction to WDC & Insight: a partnership approach**
- 2. What is our Smart future?**
- 3. Smart Atlantic Way**

Clodagh Barry, HIS Conference, October 2018



- [WDC Outline](#)
- [What we do](#)
- [Difference we make](#)
- [Next steps](#)



## The Western Development Commission

Serving a confident and ambitious Western Region where excellence, innovation and creativity are rewarded, and the rich quality of life, clean environment and unique heritage are valued and safeguarded.

### Our Vision

To be the hub for the strategic economic and social development of the Western Region.

### Counties in the Western Region

There are seven counties in the Western Region: [Donegal](#), [Sligo](#), [Leitrim](#), [Roscommon](#), [Mayo](#), [Galway](#) and [Clare](#).



# Western Investment Fund

# Policy

## JOBS

5000 Regional Jobs supported (Direct & Indirect) by WDC



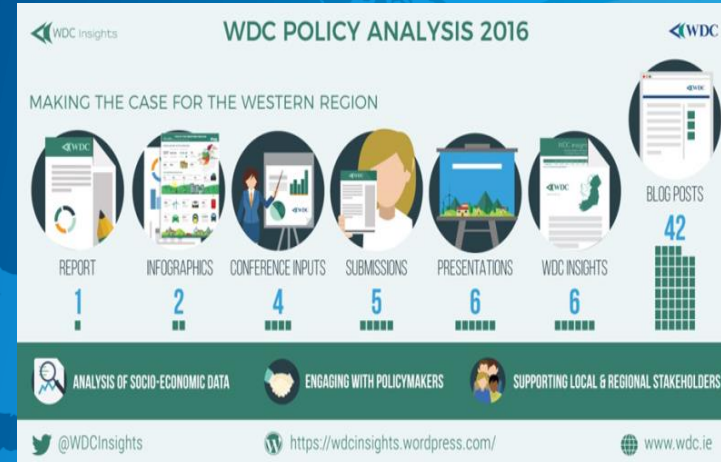
# 5K

DIRECT + INDIRECT

## INVESTMENT

€12.4 M invested in region 2014-16

# €12.4 M



# Regional Development



**BIO-  
ECONOMY**



**CREATIVE  
ECONOMY**



**NICHE  
TOURISM**







LookWest.ie: The online guide to Business, Work and Life in the West of Ireland



[About LookWest.ie](#)

[Contact Us](#)

[Media Credits](#)

Social



#LookWest

[Search LookWest.ie](#)

Connect With Us

[Subscribe to our newsletter](#)



# Insight Research Centre

National Centre for Data Analytics

- Building on 10 - 15 years of research in **Data Analytics** technologies.
- National, EU and commercial **competitive**
- Extensive international research and **Industry network** across sectors.
- Multiple **engagement models**.



**430 +**  
Researchers & Students

**140+**  
Research Awards won  
over last 3 years

**100 +**  
Contracted  
Industry Projects

**35+**  
H2020 Consortia active  
370 members, 35 Countries

**7**  
Spinouts  
35 License agreements





# The Western Region in Numbers



It all adds up to real potential



**1/3 of our  
Population  
under 25  
(youngest  
population in  
the EU)**



**2/5 3rd level  
educated  
(highest rate in  
western world)**



**Direct access to  
EU and US  
Markets  
2 International  
Airports  
+ 3 Ports**



**Internationally  
recognised  
business  
location**



**Low cost of  
Living  
High Quality  
of Life**

Private

Public

Community

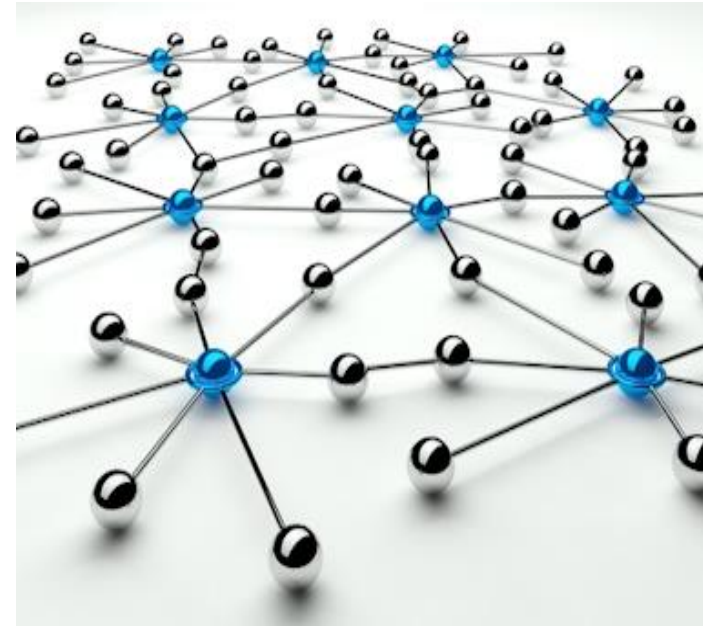
Academic

Ambition

Common Purpose

Focus

## The Challenge



Baseline



Gaps

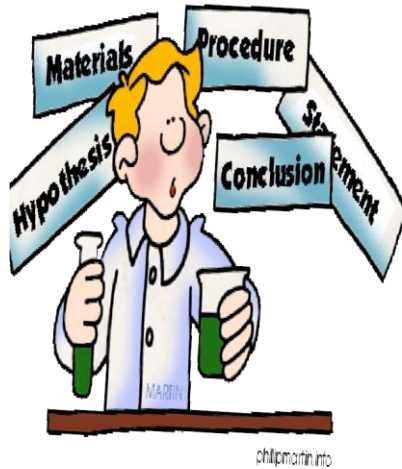


Evaluation



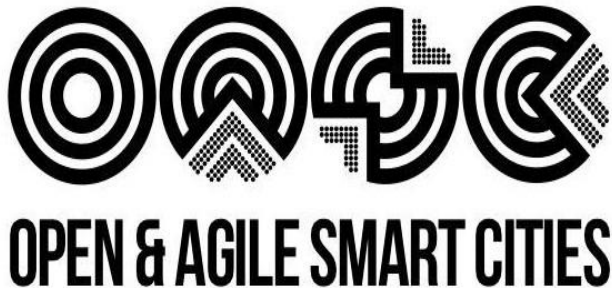
Priorities





## Western Region Economic Problem Statement:

- ✓ A particular challenge is that 70% of the population is rural.
- ✓ Our population is in decline.
- ✓ Our GVA needs to progress towards & beyond the current State average.



# A ROADMAP TOWARDS A SMART REGION

**September 2018**



# Pillars

1. Smart Regional Observatory
2. Data Infrastructure & Services
3. Governance Framework
4. Smart Business Network
5. Smart Community



## **Pillar 1. Smart Regional Observatory**

The leadership and ambition, to oversee, guide and steer the formulating of a strategic programme of work, which will drive forward the Smart Atlantic Way.



**Pillar 2. Data Infrastructure & Services** will open up access to technical expertise, knowledge and data resources for enabling the initiation, development and sustainability of a common regional infrastructure.

Co-led with Local Government.



**Pillar 3. Smart Business Network** will drive on, the existing and new regional network of businesses to provide a platform of support, pursue collective and emerging initiatives. share Smart activity, knowledge and expertise.

**Co-led** with Industry & WDC, Atlantic Economic Corridor





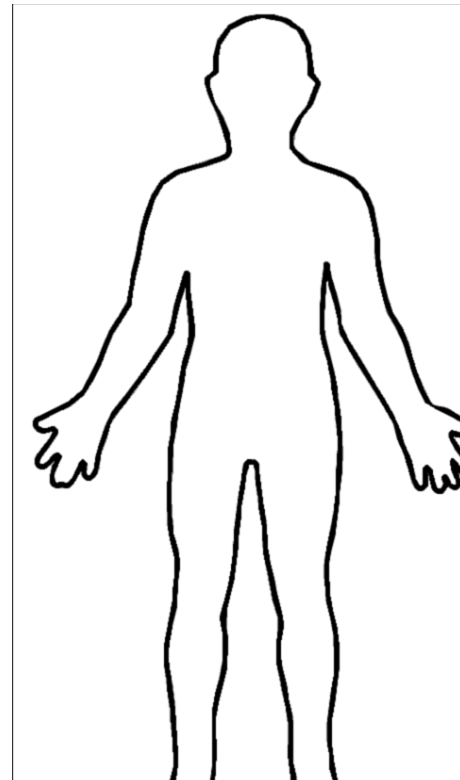
**Pillar 4. Smart Community** will actively engage communities to identify their specific needs as basis for developing initiatives in the areas of protection of vital local services (e.g. community policing), tourism and cultural facilities by exploiting digital and smart technologies

**Co-led** with the Community.



**Pillar 5. e-Governance Framework** to guide the appropriation of decision rights in SAW initiatives, to provide mechanisms for coordination and monitoring of ongoing initiatives at community, local authority and regional levels for effectiveness and attainment of associated regional goals.

**Co-led:** e-Gov Unit, Insight &  
EU Policy Advisor



# A ROADMAP TOWARDS A SMART REGION

September 2018

